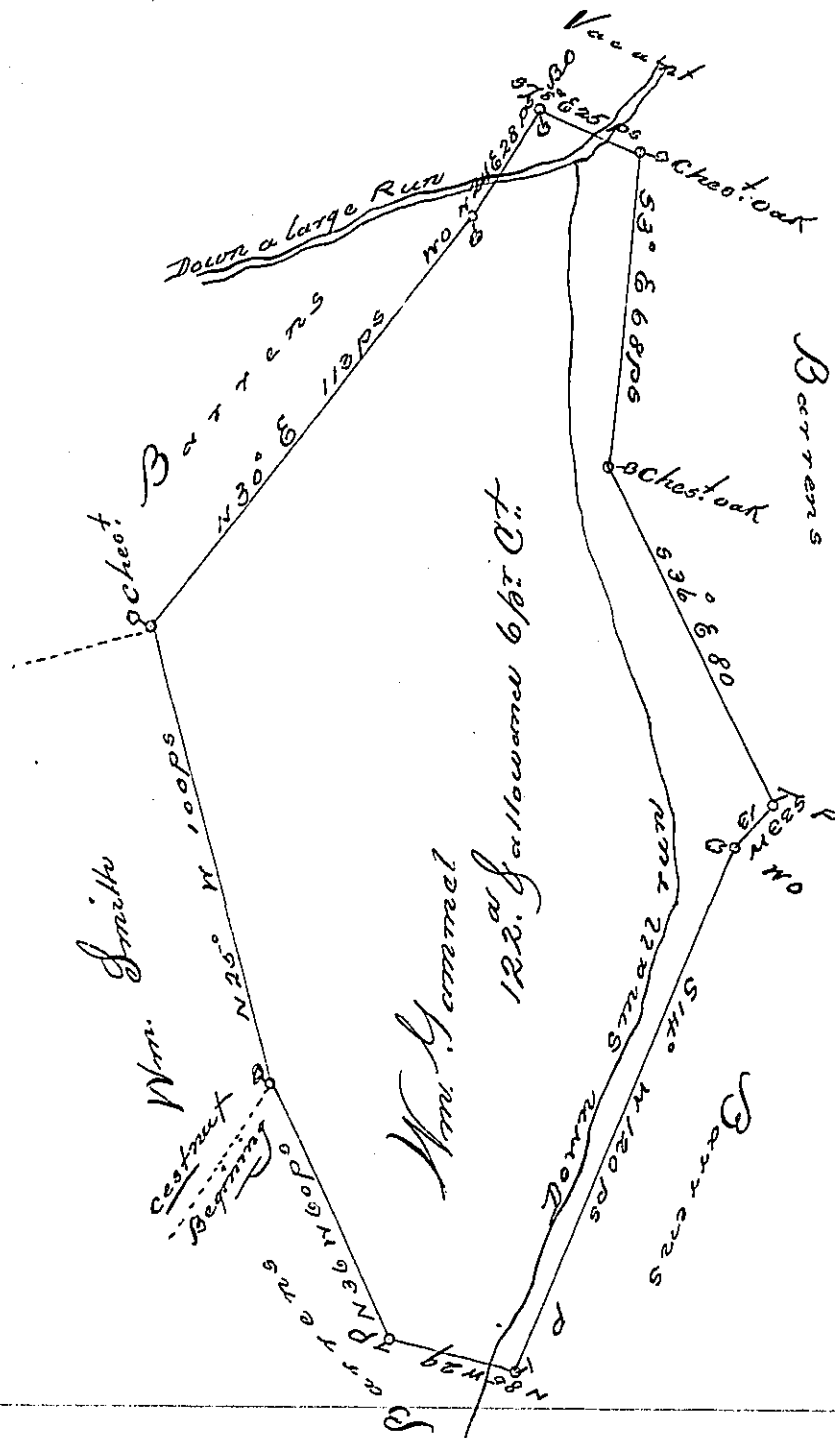


No. C.	Course	Dist.	North	South	East	West
1	N 25 W	100	90.6	-	-	42.3
2	N 30 E	113	97.9	-	56.5	-
3	N 24 E	28	25.6	-	11.4	-
4	S 78 E	25	-	5.2	24.5	-
5	S 3 E	68	-	67.9	3.6	-
6	S 36 E	80	-	64.7	47.	-
7	S 33 W	13	-	10.9	-	7.1
8	S 14 W	120	-	116.4	-	29.
9	N 85 W	29	2.5	-	-	28.9
10	N 36 W	60	48.5	-	-	35.3
			265.1	265.1	142.0	142.6



A Draught of a Tract of Land Situate in Shrewsbury Township York County, Surveyed to William Gammel in pursuance of a Warrant for 100. ac dated the 15th day of July, 1762. Surveyed the 28th of the 2d mo. 1765.

Wm. Matthews

To John Lukens
Dear Gen!

Corrected J.L.

IN TESTIMONY that the above is a copy of the original remaining on file in the Department of Internal Affairs of Pennsylvania, made conformably to an Act of Assembly approved the 16th day of February, 1833, I have hereunto set my Hand and caused the Seal of said Department to be affixed at Harrisburg, this thirtieth day of October, 1904.

Soac R. Brown
Secretary of Internal Affairs.